

# Getting Started Guide



BlackBerry® Pearl™ from Cingular.



Visit the online tutorial at [www.cingular.com/tutorials/blackberrypearl](http://www.cingular.com/tutorials/blackberrypearl)



## Welcome to Cingular®!

- Remove These Items From the Box
- BlackBerry Pearl Key Functions

## Set Up Your BlackBerry Pearl

- Insert the Battery
- Charge the Battery
  - Battery power level indicators
- Setup Wizard
  - Introduction to BlackBerry
  - Typing Tutorial
  - Owner Information
  - Font
  - Email Setup

## Get Started Using the BlackBerry Pearl

- Make Phone Calls
- Make A Phone Call Using A Voice Command
- Pair with a Bluetooth Enabled Device
- Add A Contact

4

4

5

6

6

7

7

8

8

11

11

11

12

16

16

17

18

19

Make a Push to Talk Call

- Set Up

- Make a Push to Talk Call

- Add a Push to Talk Contact

Set Up Voicemail

- Check Your Voice Mail Messages From Your BlackBerry Device

Go to Web Pages

Send Email

Media

- Insert a Media Card

Use the Camera

## Sync Your BlackBerry with Your Computer

BlackBerry Desktop Software

What You Need

Setup instructions

## Troubleshooting

## Tips and Tricks

20

20

20

21

21

21

22

23

24

25

26

27

27

28

29

34

38



## Remove These Items From the Box

Remove the following items from the box to help you set up your BlackBerry® Pearl.



BlackBerry Pearl



Getting Started Guide



BlackBerry User Tools CD  
Includes User Manual and  
Warranty information for your  
BlackBerry Pearl



AC Adapter



USB Sync Cable



Headset



Rechargeable  
Battery

## BlackBerry® Pearl Key Functions





### Insert the Battery

Steps?  
3

Takes?  
1 minute

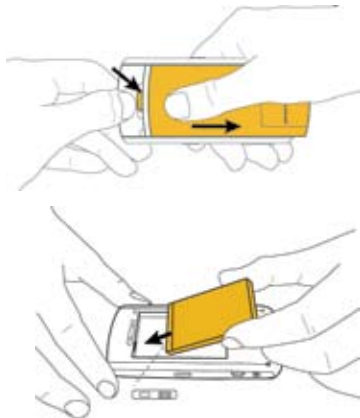
**Note:**  
If the battery is charged, the device turns on. If the device does not turn on, charge the battery.

1. Press the battery cover release button, slide the battery cover ahead

slightly and remove the battery cover. The battery cover release button is at the bottom of your BlackBerry Pearl

2. Insert the battery so that the BlackBerry logo faces up and the metal contacts on the battery align with the metal contacts on your device.

3. Slide the battery cover back onto the device so that the cover lies flat and clicks into place.



### Charge the Battery

1. Connect the small USB end of the AC charger cable to the USB port on the side of your BlackBerry device.
2. Pull the plug blades down.
3. Plug the AC charger into a power outlet.
4. Charge the battery to full power.



Steps?  
4

Takes?  
1 minute

**Note:**  
If you have an available USB port on your computer, you can use the USB cable that came with your device to connect your device to your computer for charging.

### Battery power level indicators

	full battery power
	low battery power
	battery charging

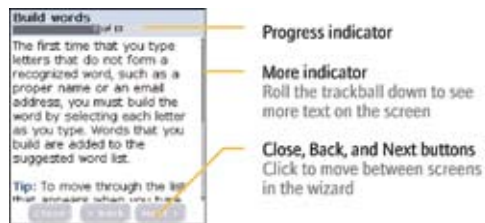


## Setup Wizard

**Takes?**  
10 minutes

**Note:**  
As you go through the Setup Wizard look for the progress indicator, to tell you how far along you are, the more indicator, to tell you there is more on the screen, and the Close, Back and Next buttons, that allow you to navigate through the wizard.

The setup wizard is designed to help you learn about typing, set options to personalize your BlackBerry Pearl, and set up one or more email addresses. The setup wizard takes approximately 10 minutes to complete. To navigate use your thumb to roll and click the trackball.



**Progress indicator**

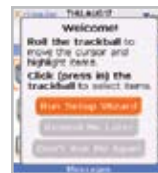
**More indicator**  
Roll the trackball down to see more text on the screen.

**Close, Back, and Next buttons**  
Click to move between screens in the wizard.

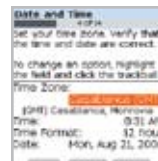
## Introduction to BlackBerry

The introduction to BlackBerry section of the Setup Wizard will help you choose your language, set the date and time, and orient you to some of the important keys/functions on your BlackBerry Pearl.

Once you have launched the Setup Wizard use the trackball the scroll up and down on the screens and highlight input fields or buttons. Click the trackball to select input fields or buttons.



Be sure to select **Yes** if asked if you want to connect to the wireless network.



To set your time zone highlight the current time zone and click the trackball. Roll the trackball up or down to find your time zone and click again to select it.

**Note:**  
The setup wizard is designed to start automatically the first time you turn on your BlackBerry Pearl.

You can return to the Setup Wizard at anytime by selecting BlackBerry Setup from the Home screen and then choosing Setup Wizard.



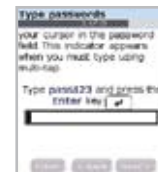
Be sure to note where the following important keys are on your BlackBerry Pearl:



- Menu
- Send
- Space
- Alt
- Symbol
- Escape
- End/Power
- Delete
- Enter
- Shift

## Typing Tutorial

The typing tutorial is designed to help you get used to typing. Cingular recommends that you take the time to complete the typing tutorial.



## Owner Information

After you have completed the Typing Tutorial the Setup Wizard will display the Owner Information screen. Enter your name and any other information you'd like.



## Font

You can choose how you want text to appear on your BlackBerry Pearl on the Font selection screen.



**Note:**  
When typing in Multi-tap mode no suggested word will appear. You must press the key once for the first letter on the key and twice for the second.



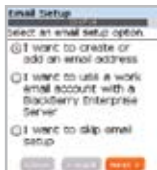
## Email Setup

Steps?  
9

Takes?  
5 minutes

Note:  
To set up email using web browser on your computer, visit [www.cingular.com/blackberrystart](http://www.cingular.com/blackberrystart).

1. The Email Setup portion of the Wizard will ask you to choose to either create or add an email address or to use a work account with a BlackBerry Enterprise™ Server. Unless you have been given an Enterprise Activation Password by your system administrator IT department you should choose **I want to create or add an email address**.

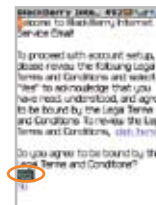


2. You must either login to your BlackBerry Internet Service account (this account will manage all the email accounts you setup on your BlackBerry device, you may have up to 10) or create a new one. If you are a new user or this is a new device you must choose **Create New Account**.



3. To continue you must accept the BlackBerry Internet Service terms and conditions.

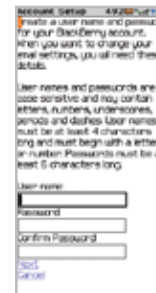
Choose **Yes** by scrolling to the bottom of the screen.



4. Create a User ID and password of your choice for your BlackBerry Internet Service Account.

**The User ID and Password must be at least 6 characters and is case sensitive.**

Store this login information in a safe place so that you can add additional email accounts to your BlackBerry device in the future.





5. Select your language by clicking on your language choice.



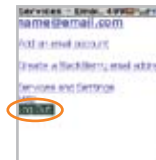
6. Enter the email address and password for the email account you are setting up.



7. Once the confirmation screen displays click OK.



8. Once the summary screen displays showing you the email account you've set up you can choose to set up another account, create a BlackBerry email address, or Logout.



9. When you Logout your device will display the BlackBerry Internet Service login screen on the BlackBerry email setup website. Be sure to close the browser window by scrolling to the bottom of the page and selecting Close Browser.



You have now completed the setup wizard.



### Typing Tips

To enter symbols like **.** and **@**, hold the **Alt** key while typing **OP** (for **.**) and **ZX** (for **@**). To find other symbols like **-**, **\_**, or **/**, use the **Symbol** key

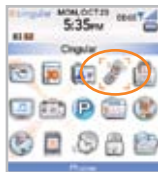








### Make Phone Calls

1. On the Home screen or in the Phone screen, perform one of the following:
  - a. Type a phone number
  - b. Type part of a contact name.Highlight a contact or phone number.



2. Press the **Send** key. 
3. To end the call, press the **End** key. 


Steps?  
3

**Note:**  
To turn the speakerphone on or off during a call, press the **Speakerphone (OP)** key, or click the trackball and then click **Activate Speakerphone/Handset**.

### Make A Phone Call Using A Voice Command

1. On the Home screen click **Voice Dialing**.



2. Wait for the sound.
3. Say "Call" and a contact name or phone number.
4. To end the call, press the **End** key. 

Steps?  
4

**Note:**  
To learn more about voice dialing features, refer to the voice dialing section in the Help menu on your device .



### Pair with a Bluetooth Enabled Device


Some Bluetooth® enabled devices have preset passkeys that you must type before you can pair with them.

1. On the Home screen, click **BlackBerry Setup**. Click **Set Up Bluetooth**. Click **OK**.
2. Click a Bluetooth enabled device.
3. If required, type the passkey for the Bluetooth enabled device on your BlackBerry Pearl.
4. If required, type the passkey for the Bluetooth enabled device on the Bluetooth enabled device.

### Add A Contact

1. On the Home screen click **Address Book**



2. Press the **Menu** key. 
3. Click **New Address**.
4. Type the contact information.
5. Click the trackball.
6. Click **Save**.

Steps?  
4

Takes?  
1 minute

Steps?  
6

Takes?  
1 minute



### Make a Push to Talk Call

#### Set Up

1. On the Home screen, click the **PTT** icon or activate PTT by pressing the PTT Key on the left side of the phone (**Left Side Convenience** key).
2. Select **Yes** when asked if you want to initialize PTT.
3. When asked to, enter a name (up to 20 characters) and select **OK**.
4. Once initialization is complete, (it can take a few minutes), PTT is ready for use and an icon will appear near the top of the home screen.



#### Make a Push to Talk Call

1. On the PTT Menu screen, click **PTT Contacts**.
2. To speak or listen, perform one of the following actions:
  - a. To speak, hold the **Left Side Convenience** key.
  - b. To listen, release the **Left Side Convenience** key.

To end the Push to Talk call, hold the End key.



#### Note:

You must have a PTT subscription to set up the PTT service.

To confirm PTT is activated select the PTT icon on your home screen, the bottom of the screen should read PTT is On.

Steps?  
3

Takes?  
1 minute

### Add a Push to Talk Contact

Verify that the contact subscribes to Cingular Push to Talk service. When you add a Push to Talk contact, you invite the contact to join your contact list. The contact can accept, decline, or defer your invitation.

1. On the PTT Menu screen, click **Add Contact**.
2. Type the contact information.
3. Click **OK**.

### Set Up Voicemail

Press and hold the **1** key on your BlackBerry device. You will be connected to the voicemail system, which will then ask you to:

1. Create your password
2. Record your name
3. Record a greeting

### Check Your Voice Mail Messages From Your BlackBerry Device

1. Press and hold the **1** key.
2. Follow the voice prompts.

Steps?  
3

Takes?  
2 minutes

Check Your Voice Mail Messages From Other Phones:

1. Dial your 10-digit wireless number.

2. Press the **\*** key when you hear your personal greeting; ( Press the **#** key for Puerto Rico)

3. Enter your personal passcode.

4. Follow the voice prompts.




### Go to Web Pages


There are two different browsers on your BlackBerry Pearl: the **Cingular MEdia Net Browser** and an **Internet Browser**. Use the Cingular MEdia Net browser to access your favorite web pages and downloads using Cingular's MEdia Net content service. Use the Internet Browser to access any web site online.

1. On the Home screen, click **Browser** or **Cingular MEdia Net**.



2. Once the browser is open, press the **Menu** key. 
3. Click **Go To....**
4. In the dialog box that appears enter the URL (web address, e.g. [www.cingular.com](http://www.cingular.com)) that you wish to go to.
5. Click the trackball.

### Send Email


1. On the Home screen, click **Messages**.
2. Press the **Menu** key. 
3. Click **Compose Email**.
4. In the **To** field, perform one of the following actions:
  - a) Type an email address.
  - b) Type a contact name.
  - c) Type part of a contact name. Click a contact.
5. Type a message.
6. Click the trackball.
7. Click **Send**.



If you have associated your BlackBerry Pearl with more than one email address, in the Send Using field, you can set the email address that you use to send the email message.

Note: You must set up an email account on your BlackBerry device to send email. To learn how to set up an email account, refer to the Email Account setup in the Setup Wizard.

Steps?  
5  
Takes?  
2 minutes

Typing Tips  
To enter symbols like . and @, hold the Alt key while typing OP (for .) and ZX (for @). To find other symbols like -, \_ or /, use the Symbol key 

Steps?  
7  
Takes?  
2 minutes



## Media

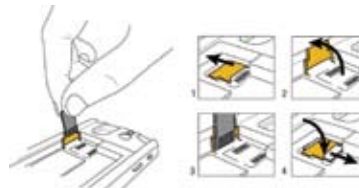
In the media application, you can open media files, such as videos, ring tones, pictures, or songs that are stored in media folders in your BlackBerry Pearl memory. You might have some preloaded media files, including background pictures and ring tones, in a Preloaded Media folder on your device. Preloaded media files cannot be deleted, renamed, or moved.



## Insert a Media Card

Use a microSD media card (sold separately) to extend the memory available on your device for storing media files such as ring tones, videos, pictures, or songs.

1. Turn off your device.
2. Press the battery cover release button.
3. Slide off the battery cover.
4. Remove the battery.
5. Slide the media card holder door toward its hinges to unlock it.
6. Lift the media card holder door.
7. Insert the media card into the slots in the media card holder door so that the metal connectors on the card will align with the metal contacts on your device when the media card holder door is closed.
8. Close the media card holder door.
9. Slide the media card door away from its hinges to lock it.



Steps?  
9

Takes?  
1 minute



## Take a Picture

1. On the Home screen, click **Camera**.



2. Take a picture by clicking the trackball
3. Perform one of the following actions:
  - a) To take another picture, click the camera icon.
  - b) To delete the picture, click the trash can icon.
  - c) To set the picture as a caller ID picture or Home screen background, click the crop icon.
  - d) To send the picture via email, click the envelope icon.
  - e) To rename the picture, click the file folder icon.

Steps?  
3

Takes?  
1 minute

Tip:  
To open the camera quickly, press the Right Convenience key.

## BlackBerry Desktop Software

You can install the BlackBerry Desktop Software on your computer and connect your BlackBerry device to your computer to perform any of the following actions:

- Synchronize organizer data such as contacts, calendar entries, tasks, and memos between your device and your computer.
- Back up and restore BlackBerry device data.
- Transfer media files between your device and your computer.
- Add applications to your device.
- Set up and manage email message forwarding or wireless calendar synchronization if your BlackBerry Enterprise Server administrator has advised you to do so.

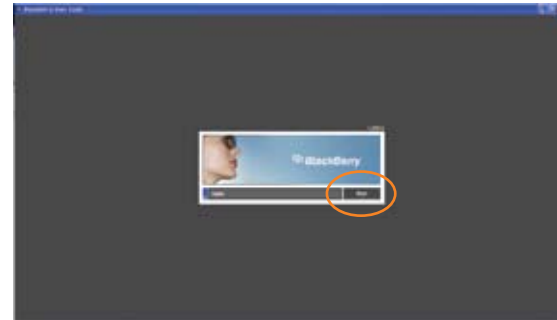


## What You Need

- Intel® compatible 486 or higher computer that is compliant with USB 1.1 or later
- Windows® 98, Windows ME, Windows 2000, or Windows XP
- Available USB port
- CD drive
- If you use Windows 98 (not Windows 98 Second Edition), you must download the DCOM 98 version 1.3 update from [www.microsoft.com/com/default.mspx](http://www.microsoft.com/com/default.mspx) for the USB driver to operate as expected.

## Setup instructions

1. Verify that your BlackBerry Pearl is NOT connected to your computer.
2. Insert the BlackBerry User Tools CD into the CD drive on your computer.
3. Follow the instructions on the screen starting with selecting your language and clicking **Begin**.



Steps?  
7

Takes?  
5 minutes



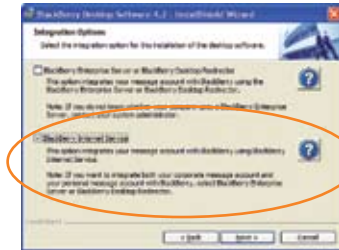
After you have selected your language, click **BlackBerry Desktop Software** to begin installing the software.



Now click **Install BlackBerry Desktop Software**.



Choose **BlackBerry Internet Service** if you have set up a personal email account. Only choose BlackBerry Enterprise Server if your company uses this service.



4. When the installation is complete the BlackBerry Desktop Software should automatically open. If it does not click **Start > Programs > BlackBerry > Desktop Manager** from the taskbar.







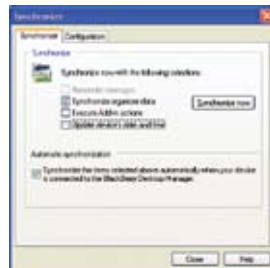
5. Connect the smaller end of the USB cable to your device and connect the larger end of the USB cable to the USB port on your computer.

Note: You may need to configure your connection settings. Click Options then connection settings from the menu of your BlackBerry Desktop Manager. Select USB.



6. Click the **Synchronize** icon in the Desktop Manager and setup your configuration options.

Be sure to click on the Configuration tab to set your configuration settings.



7. When you have finished setting up the configuration settings click **Synchronize Now**

Note: To learn more about synchronizing data, backing up or restoring data, adding applications, or other functions, click **Help** in the BlackBerry Desktop Software.





## I cannot connect to a wireless network.

Try performing one of the following actions:

- Verify that your SIM card is inserted correctly.
- Verify that you have turned on the connection to the wireless network.

## I cannot associate my device with an email address.

Try performing the following actions:

- On the email setup web site, verify that you have typed all the email address information correctly. Use the multi-tap input method to type your password.
- Log in to the email setup web site and add an email address to your BlackBerry device using a browser on your computer. To log in to the email setup web site, type the email setup web site address provided by your wireless service provider in a browser on your computer. If you have already created a login ID and password, use this information to log in. If you have not created a login user ID and password, click **Create New Account** and complete the instructions on the screen.
- Verify that the email address is associated with a supported email account (for example, a POP3 or IMAP account). If you cannot add the email address using a browser on your device or your computer, contact your wireless service provider for more information on supported email accounts.


## I do not know which email setup option to choose in the setup wizard.

- Select the **I want to add or create an email address** option if the other options do not apply to you. This option is the most common option for individual users. If you select this option, an email setup web site opens. On the web site, you can create a new email address for your BlackBerry® device or associate your device with an existing supported email address.
- Select the **I want to use a work email account with a BlackBerry Enterprise Server** option if a BlackBerry Enterprise Server system administrator has provided you with a password that you can use to activate your device over the wireless network. If you select this option, an Enterprise Activation screen appears. On this screen, you can type your work email address and the password provided by your system administrator to activate your device.
- Select **Skip email setup** if any of the following situations apply:
  - A representative from the store where you purchased your device has already helped you to set up your email address.
  - You have already visited the email setup web site and have set up an email address using a browser on your computer.
  - You have an existing email account and have access to a BlackBerry Enterprise Server, but your BlackBerry Enterprise Server system administrator has not provided you with a password that you can use to activate your device over the wireless network. Contact your system administrator for more information about setting up email for your device.
  - You have a Microsoft® Outlook Workgroup (Workgroup Installation) email account on a Microsoft®Exchange Server version 5.5. or later and you want to use the to forward email messages to your device.




## I cannot send messages.

Try performing the following actions:

- Verify that your BlackBerry® device is connected to the wireless network. If you are not in a wireless coverage area, your device should send the messages when you return to a wireless coverage area.
- If the menu item for sending a message does not appear, verify that you have added an email address or PIN for your contact.
- If you created an email address or added an existing email address to your device using the email setup web site, verify that you have received an activation message on your device from the BlackBerry Internet Service. If you have not received an activation message (the message might take a short period of time to arrive), use the email setup web site to send a service book to your device.
- If you have not received a registration message from the wireless network, register your device. In the device options, click **Advanced Options**. Click **Host Routing Table**. Press the **Menu** key.  Click **Register Now**.
- Resend the message. Open the message. Press the **Menu** key. Click **Resend**.

## I am not receiving messages .

Try performing the following actions:

1. Verify that your BlackBerry® device is connected to the wireless network. If you are not in a wireless coverage area, you should receive messages when you return to a wireless coverage area.
2. If you created an email address or added an existing email address to your device using the email setup web site, verify that you have received an activation message on your device from the BlackBerry Internet Service. If you have not received an activation message (the message might take a short period of time to arrive), use the email setup web site to send a service book to your device.
3. If you have not received a registration message from the wireless network, register your device. In the device options, click **Advanced Options**. Click **Host Routing Table**. Press the **Menu** key.  Click **Register Now**.
4. If you use email message filters, verify that your email message filter options are set correctly.

## I cannot make or receive calls.

Try performing the following actions:

1. Verify that your BlackBerry device is connected to the wireless network.
2. If you cannot make calls and fixed dialing is turned on, verify that the phone number for your contact appears in your fixed dialing list or turn off fixed dialing.
3. If you have traveled to another country and you have not changed your smart-dialing options, dial the full phone number, including the country code and area code, for your contact.
4. If you are not receiving calls, verify that call blocking and call forwarding are turned off.



## KEYBOARD

TO:	DO:
<ul style="list-style-type: none"> <li>Lock the keyboard</li> </ul>	Hold <b>Star (*)</b> or click <b>Keyboard Lock</b>
<ul style="list-style-type: none"> <li>To unlock the keyboard</li> </ul>	Press <b>Star (*)</b> and then <b>Send</b>

## TYPING

TO:	DO:
<ul style="list-style-type: none"> <li>Insert a period</li> </ul>	Press <b>Space</b> twice, next letter is capitalized
<ul style="list-style-type: none"> <li>Capitalize a letter</li> </ul>	Hold the letter key or press the <b>Shift</b> key until capitalized letter appears
<ul style="list-style-type: none"> <li>Type alternate character on a key</li> </ul>	Press the <b>Alt</b> key  and then press the character key
<ul style="list-style-type: none"> <li>Insert @ and periods in an email field</li> </ul>	Press <b>Space</b>
<ul style="list-style-type: none"> <li>Type a symbol</li> </ul>	Press the <b>Symbol</b> key  and then click a symbol
<ul style="list-style-type: none"> <li>Type an accented letter</li> </ul>	Hold the letter key and roll the trackball to highlight a character. Click the accented letter.
<ul style="list-style-type: none"> <li>Turn on number lock</li> </ul>	Hold the <b>Shift</b> key  and press the <b>Alt</b> key
<ul style="list-style-type: none"> <li>Turn off number lock</li> </ul>	Press the <b>Alt</b> key

## NAVIGATING SCREEN

TO:	DO:
<ul style="list-style-type: none"> <li>Move up to top of screen</li> </ul>	Press <b>1</b>
<ul style="list-style-type: none"> <li>Move to bottom of screen</li> </ul>	Press <b>7</b>

## GENERAL TIP

TO:	DO:
<ul style="list-style-type: none"> <li>Reboot</li> </ul>	Remove battery

## CAMERA

TO:	DO:
<ul style="list-style-type: none"> <li>To Zoom</li> </ul>	Press the <b>+ / -</b> buttons on the right hand side
<ul style="list-style-type: none"> <li>Flash setting</li> </ul>	Press <b>0 / space</b> to set Auto / On / Off

## ATTACHMENTS

TO:	DO:
<ul style="list-style-type: none"> <li>Pan horizontally across an image</li> </ul>	Hold <b>Alt (Up/Down arrows)</b> key and roll <b>Trackball</b>

## PHONE

TO:	DO:
<ul style="list-style-type: none"> <li>Turn speaker phone on/off during a call</li> </ul>	Press <b>OP</b>
<ul style="list-style-type: none"> <li>Switch between default &amp; vibrate notification profiles</li> </ul>	Hold <b>Pound (#)</b>
<ul style="list-style-type: none"> <li>Type a letter in a number field</li> </ul>	Hold <b>Alt</b> key and press the letter key once of the first letter and twice for the second letter



## Connect to Wireless Network

To connect to the wireless network successfully, the device must be powered on, your wireless service must be active, and you must be in a coverage area.

<b>EDGE</b>	You can use the phone, send and receive email, PIN, SMS text, and MMS messages, and use the browser with a high speed data connection.
<b>GPRS</b>	You can use the phone, send and receive email, PIN, SMS text, and MMS messages, and use the browser.
<b>edge gprs GSM</b>	You can use the phone and send and receive SMS text messages.
<b>SOS</b>	You can only make emergency calls.
<b>OFF</b>	Your device radio is turned off.
<b>X</b>	You are not in a wireless coverage area.

- a) Verify your BlackBerry Pearl is turned on.
- b) Your BlackBerry Pearl should automatically connect to the wireless network in your area. If you see “Off” in the top right hand corner of your screen, the wireless functionality is turned off and you need to turn it on.

To turn the wireless network on or off from the Home screen use the trackball to scroll to the Turn **WIRELESS ON/TURN WIRELESS OFF** icon (radio tower) and click the trackball to select it.

When your BlackBerry Pearl is not connected to the wireless network you can continue to use features that don't require a connection such as typing and saving draft email messages, managing tasks, or using the calculator. You will see the error message 'Radio is Off' if you try to use any of the wireless features.



## Accessories

You can buy accessories such as batteries, carrying solutions, headsets, and charging solutions for your BlackBerry Pearl device. Visit your local Cingular store for more information.

**CAUTION:** Use only accessories that Research In Motion has approved for use with your device model. Use of other accessories might invalidate your warranty and might be dangerous.



©2006 Research In Motion Limited. All Rights Reserved. The BlackBerry and RIM families of related marks, images, and symbols are the exclusive properties of Research In Motion Limited. RIM, Research In Motion, BlackBerry, 'Always On, Always Connected' and the 'envelope in motion' symbol are registered with the U.S. Patent and Trademark Office and may be pending or registered in other countries. Cingular, and the graphic icon are registered trademarks of Cingular Wireless LLC. Raising the bar and graphic icon are registered trademarks of Cingular Wireless LLC.

The Bluetooth word mark and logos are owned by the Bluetooth SIG, Inc. and any use of such marks by Research In Motion is under license. IBM, Lotus, Domino, and Lotus Notes are either registered trademarks or trademarks of International Business Machines Corporation in the United States, other countries, or both. Microsoft, Outlook, PowerPoint, and Windows are either registered trademarks or trademarks of Microsoft Corporation in the United States and/or other countries. Novell and GroupWise are either registered trademarks or trademarks of Novell, Inc., in the United States and other countries. All other brands, product names, company names, trademarks, and service marks are the properties of their respective owners.

The BlackBerry device and/or associated software are protected by copyright, international treaties, and various patents, including one or more of the following U.S. patents: 6,278,442; 6,271,605; 6,219,694; 6,075,470; 6,073,318; D445,428; D433,460; D416,256. Other patents are registered or pending in various countries around the world. Visit [www.rim.com/patents](http://www.rim.com/patents) for a list of RIM [as hereinafter defined] patents.

This document is provided 'as is' and Research In Motion Limited and its affiliated companies ('RIM') assume no responsibility for any typographical, technical, or other inaccuracies in this document. In order to protect RIM proprietary and confidential information and/or trade secrets, this document may describe some aspects of RIM technology in generalized terms. RIM reserves the right to periodically change information that is contained in this document; however, RIM makes no commitment to provide any such changes, updates, enhancements, or other additions to this document to you in a timely manner or at all. RIM MAKES NO REPRESENTATIONS, WARRANTIES, CONDITIONS, OR COVENANTS, EITHER EXPRESS OR IMPLIED (INCLUDING WITHOUT LIMITATION, ANY EXPRESS OR IMPLIED WARRANTIES OR CONDITIONS OF FITNESS FOR A PARTICULAR PURPOSE, NON-INFRINGEMENT, MERCHANTABILITY, DURABILITY, TITLE, OR RELATED TO THE PERFORMANCE OR NON-PERFORMANCE OF ANY SOFTWARE REFERENCED HEREIN OR PERFORMANCE OF ANY SERVICES REFERENCED HEREIN). IN CONNECTION WITH YOUR USE OF THIS DOCUMENTATION, NEITHER CINGULAR/RIM NOR THEIR RESPECTIVE AFFILIATED COMPANIES, DIRECTORS, OFFICERS, EMPLOYEES, OR CONSULTANTS SHALL BE LIABLE TO YOU FOR ANY DAMAGES WHATSOEVER BE THEY DIRECT, ECONOMIC, COMMERCIAL, SPECIAL, CONSEQUENTIAL, INCIDENTAL, EXEMPLARY, OR INDIRECT DAMAGES, EVEN IF CINGULAR/RIM HAS BEEN ADVISED OF THE POSSIBILITY OF SUCH DAMAGES, INCLUDING WITHOUT LIMITATION, LOSS OF BUSINESS REVENUE OR EARNINGS, LOST DATA, DAMAGES CAUSED BY DELAYS, LOST PROFITS, OR A FAILURE TO REALIZE EXPECTED SAVINGS.

This document might contain references to third-party sources of information, hardware or software, products or services and/or third-party web sites (collectively the 'Third-Party Information'). RIM does not control, and is not responsible for, any Third-Party Information, including, without limitation the content, accuracy, copyright compliance, compatibility, performance, trustworthiness, legality, decency, links, or any other aspect of Third-Party Information. The inclusion of Third-Party Information in this document does not imply endorsement by RIM of the Third-Party Information or the third-party in any way. Installation and use of Third-Party Information with RIM's products and services may require one or more patent, trademark, or copyright licenses in order to avoid infringement of the intellectual property rights of others. Any dealings with Third-Party Information, including, without limitation, compliance with applicable licenses and terms and conditions, are solely between you and the third-party. You are solely responsible for determining whether such third-party licenses are required and are responsible for acquiring any such licenses relating to Third-Party Information. To the extent that such intellectual property licenses may be required, RIM expressly recommends that you do not install or use Third-Party Information until all such applicable licenses have been acquired by you or on your behalf. Your use of Third-Party Information shall be governed by and subject to you agreeing to the terms of the Third-Party Information licenses. Any Third-Party Information that is provided with RIM's products and services is provided 'as is'. RIM makes no representation, warranty or guarantee whatsoever in relation to the Third-Party Information and RIM assumes no liability whatsoever in relation to the Third-Party Information even if RIM has been advised of the possibility of such damages or can anticipate such damages.










Research In Motion Limited  
295 Phillip Street  
Waterloo, ON N2L 3W8  
Canada

Research In Motion UK Limited  
Centrum House, 36 Station Road  
Egham, Surrey TW20 9LF  
United Kingdom  
Published in Canada






BlackBerry® Pearl™ 8100c

## Applications











Take some time to explore the applications that are available on your BlackBerry® device. Here are a few applications to get you started.

Icon	Description
	Click <b>Setup Wizard</b> to learn about typing, set options to personalize your device, and set up your email address. The setup wizard also provides links to extra information about common tasks.
	Click <b>Cingular Browser</b> to visit web pages, or view the browser bookmarks list.
	Click <b>Call Log</b> to view a list of recent calls or make a phone call.
	Click <b>Push to Talk</b> to add a push to talk contact and set options for the push to talk application.
	Click <b>Camera</b> to take a picture.
	Click <b>Media</b> to view saved pictures, ring tones, videos, or songs.
	Click <b>Messages</b> to view a list of your messages. More than one message list might appear on your device.
	Click <b>Options</b> to view the main list of device options. You can also access additional options from the menu in each application.
	Click <b>Help</b> to view the user guide for your device. The user guide provides procedures to help you use your device.


## Typing Indicators

Icon	Description	Icon	Description
	multi-tap input mode		number lock mode
	Shift mode		typing input language
	Alt mode		

## Home screen status indicators

Icon	Description	Icon	Description
	alarm set		home zone
	unopened message count		sending data
	missed calendar reminder		receiving data
	voice mail message		roaming
	Bluetooth® technology is turned on		paired with Bluetooth® enabled device

## Message list status indicators

Icon	Description	Icon	Description
	unopened message		MMS message
	opened message		sent message
	message includes attachment		message is sending
	message is high priority		error sending message
	SMS message		

## Phone call status indicators

Icon	Description	Icon	Description
	missed call		received call
	placed call		

## Find More Information

- To view the user guide for your BlackBerry® device, click **Help** in the application list, or in an application menu.
- To view the user guide, safety and product information booklet, or software license agreement and warranty for your device, insert the **BlackBerry User Tools CD** in the CD drive on your computer.
- To try a free online tutorial for your device, visit [www.cingular.com/tutorials/blackberrypearl](http://www.cingular.com/tutorials/blackberrypearl).
- To find information about your wireless network or your wireless service plan visit [www.cingular.com](http://www.cingular.com).

